

SECTORUPDATE

RVLNEWS

AUGUST | ISSUE 06



RVL SETS RECORD JULY FLIGHT FIGURES

Specialist aviation services provider RVL Group notched up a record number of flights and flying hours in July, underlining the company's strong progress and recovery from the operational challenges posed by the Covid-19 pandemic.

East Midlands Airport-based RVL completed a total of 374 flight sectors during July, shuttling between 42 different airports in 13 different countries in the course of more than 515 hours of operations.

It was a record flight tally for RVL in terms of ad hoc operations and was, says Richard Baker, RVL's Head of Flight Operations, a technical and logistical tour de force by the company and its staff.

"July marked a big upturn in operational activity for RVL, with all of our pilots and every single aircraft in our fleet playing an active role. Behind the scenes the whole company pulled together to help achieve these results, with flawless operational planning, logistics and maintenance ensuring the smooth operation of every flight."

In addition to the multiple inter-UK shuttle flights, hauling cargo and personnel that form RVL's staple schedule of operations alongside its aerial surveying work, the company undertook many flights on behalf of its cargo and passenger charter clients. These included a trip to the Faroe Islands airport of Vágur, known for its tricky visual approach; another to Billund Airport, Denmark, and one to Vigo in Western Spain.

The relative lack of passenger air traffic over the UK during July continued to assist RVL and its aerial survey client partners, permitting RVL aircraft an increase in flight frequency and duration, as well as better access to some usually congested areas of the country.

"July was an exceptional month for RVL Group," said Managing Director Dave Connor, "and all the indications are that August is going to prove just as busy for us, if not busier. Given the difficulties that the Covid-19 crisis has thrown up not only for us but for all businesses in every sector, it is an encouraging sign that we are moving towards some form of recovery. Our team has the capability to respond quickly to all challenges, which is why we at RVL are equipped and able to support our wide range of customers on a continual basis."

PAUSE FOR LONDON CITY AIRPORT DEVELOPMENT PLANS

London City Airport has decided to pause further planned development once its current programme of works is completed by the year's end, blaming a slower-than-expected recovery in the UK aviation.

"In this context the airport has decided to re-evaluate the timing of the next phases of the development programme, including the new terminal extension," says the airport.

Improvements currently in hand include eight new aircraft stands capable of accommodating the new generation of cleaner, more sustainable aircraft such as the Airbus A220, and the Embraer E2-190, as well as a full-length parallel taxiway providing the ability to allow 45 aircraft movements per hour.
(Link: [Business Airport International](#))

EASTERN AIRWAYS TO LAUNCH FLIGHTS FROM TEESSIDE TO HEATHROW

Eastern Airways is launching flights from Teesside Airport to London Heathrow from September. The daily jet service will provide a crucial link connecting the Tees Valley area, which includes Hartlepool, Darlington and Middlesbrough, with the capital.

Roger Hage, Eastern Airways' General Manager Commercial & Operations, said: "The opportunity for Eastern Airways to connect Teesside to London Heathrow is significant for the region's economic prosperity and recovery. We look forward with our partners at Teesside and London to restoring a link missing for over a decade."

The flight will be operated by a 76-seat Embraer E170 aircraft.
(Link: [UK Aviation News](#))

BEECHCRAFT LAUNCHES NEW KING AIR 360 FLAGSHIP



Textron Aviation has unveiled a new addition to the Beechcraft King Air family of turboprops – the King Air 360/360ER.

Updates to the family's flagship include a redesigned cabin and comfort improvements, as well as technological advances in the cockpit. The aircraft is already in production, with deliveries expected to begin later this year.

"The Beechcraft King Air 360 builds on decades of renowned versatility and reliability in the King Air family, and this upgrade further elevates it with the aircraft's superior features and engineering advancements designed to create an enhanced flying experience for passengers and crew alike," said Ron Draper, president and CEO at Textron Aviation. "The aircraft is a result of our extensive conversations with our turboprop customers worldwide as we continually increase innovation and next-generation capability to help them achieve their varied missions with greater comfort, technology and ease."

The new aircraft has a cabin altitude of 5,960ft (1,817m) at a typical cruising altitude of 27,000ft (8,230m) – more than 10% lower than on the King Air 350i. Cabin altitude levels have been improved

to provide greater comfort for passengers, especially during longer flights.

With seating for up to nine passengers, the latest King Air features a redesigned cabin with custom-built cabinetry, partitions and side ledges, upgraded materials and finishes, along with new interior schemes. Other amenities that come standard on the entire King Air line-up include pull-out work tables, standard power outlets, USB charging stations and a private aft lavatory.

A key feature of the King Air 360 cockpit is the addition of the IS&S ThrustSense Autothrottle. The autothrottle automatically manages engine power from the take-off roll through the climb, cruise, descent, go-around and landing phases of flight. This enhancement reduces pilot workload and supports them in their continuous vigilance to prevent over-speed or under-speed, over-temp and over-torque conditions.

Nearly 7,600 King Air turboprops have been delivered to customers around the world since 1964. The worldwide fleet has surpassed 62 million flight hours in its 56 years, serving in all branches of the US military and flying both commercial and special-mission roles around the world. [\(Link: Business Airport International\)](#)

US AIR CARGO SHOWS YEAR-ON-YEAR INCREASE

US airlines carried 9.4% more cargo by weight in June than in the corresponding month last year, the largest annual gain since January 2018, fuelled by an increase of almost 14% in domestic cargo.

A 3.6% decline in international cargo was the smallest annual loss since November 2019, according to preliminary data filed with the Bureau of Transportation Statistics (BTS) by 13 of the leading cargo airlines. [\(Link: AJOT\)](#)

INCREASED DEMAND LEADS NETJETS TO REINSTATE ALL EUROPEAN CREWS



NetJets has offered to reinstate all NetJets Europe pilots and cabin crew who were furloughed in April. Additionally, NetJets will restore a portion of the fleet in Europe to reach typical pre-pandemic flight levels serving customer demand and add more than 60 additional aircraft across the fleet worldwide between now and the end of next year.

"We are confident in the momentum we are seeing and proud of all the work our teams are doing that resulted in our ability to expand our global fleet in this way," said Patrick Gallagher, President of NetJets Sales, Marketing and Service.

NetJets reports a strong increase in new owners joining NetJets. Globally, NetJets is seeing days with flight volumes within 20% of the typical pre-pandemic levels. [\(Link: BlueSky News\)](#)

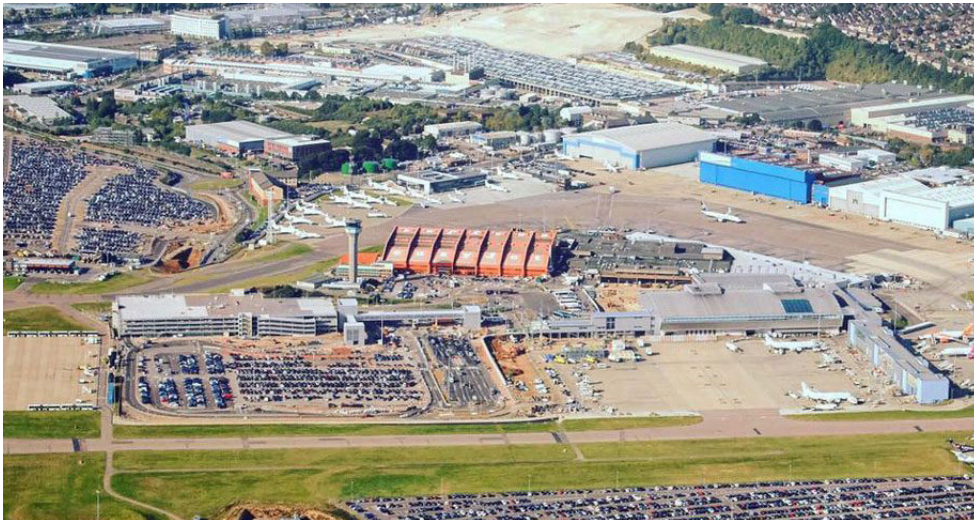
BEAR ON RUNWAY PROMPTS A320 TO 'GO AROUND' IN RUSSIA

An S7 Airlines flight across Russia almost met a grizzly end when a bear wandered onto the runway. Thankfully, the observant flight crew noticed the bumbling bear before it was too late and took avoiding action.

The 4000km flight from Novosibirsk to Magadan involved an Airbus A320neo. It was on final approach to Magadan, at around 500ft, when the crew noticed the runway was already occupied by the large bear.

The crew initiated a go around and the aircraft landed safely about 20 minutes later. [\(Link: Simple Flying\)](#)

LONDON LUTON AIRPORT HAS 'STRONGEST RECOVERY OF ANY MAJOR AIRPORT IN THE UK'



Passenger traffic was down 74 per cent at London Luton in July, despite the resumption of more than 50 routes by the airport's largest airline Wizz Air. The Hungarian low-cost carrier was among the first to resume regular scheduled flights from the UK following the onset of Covid-19, and is currently operating services to 58 destinations from Luton.

The airport said that it had "the strongest recovery of any major airport in the UK", with July's passenger numbers representing a significant increase on the previous month, but it warned that the figures "show that coronavirus is continuing to have a dramatic impact on the aviation industry."

The airport's CEO Alberto Martin said government assistance would be key to recovery over the coming months: "While we're delighted to see more passengers passing through the airport, we are still a long way from normal. Over the next couple of months Government assistance is going to be key." ([Link: Business Traveller](#))

UK'S SKYBORNE AIRLINE ACADEMY ORDERS 10 BYE AEROSPACE EFLYERS

Gloucestershire Airport-based pilot training company Skyborne Airline Academy has completed purchase deposits for six eFlyer 2 and four eFlyer 4 all-electric planes to be added to its fleet, says maker Bye Aerospace.

"We are radically redefining every aspect of airline pilot training, and that includes incorporating all-electric aircraft into our fleet as we invest in the latest technology for our trainees and staff," said Lee Woodward, Skyborne CEO. "A significant reduction in global carbon emissions is the goal for most socially responsible organizations in our industry, and with the help of Bye Aerospace we aim to lead the way in the UK."



Bye Aerospace's current and future families of aircraft are claimed to offer five-fold lower operating costs, zero emissions, and decreased noise. Bye Aerospace estimates the eFlyer will eliminate the release of five million metric tons of CO₂ each year for flight training. ([Link: BlueSky News](#))

QATAR AIRWAYS CARGO AND SWISSPORT RENEW THEIR LINKS

Qatar Airways Cargo has signed five-year contracts for cargo handling at Manchester and Birmingham airports. The contract, signed with Swissport, will allow the Gulf cargo company to use its road feeder services to Aberdeen, Belfast, Bristol, East Midlands, Glasgow, and Newcastle via the airport warehouses, according to Swissport.

Swissport is also renewing its contract with Qatar Airways Cargo, for airport ground services and cargo handling at Schiphol airport Amsterdam.

"Our long-term partnership with Swissport in Amsterdam, Manchester and Birmingham will allow us to offer our customers fast, seamless and efficient handling for all types of cargo," said Guillaume Halleux, Chief Officer Cargo at Qatar Airways. ([Link: AeroTime Hub](#))

HEATHROW AIRPORT SAYS UK QUARANTINE IS STRANGLING ECONOMY

London's Heathrow blamed the UK Government for July traffic figures that show scant evidence of a recovery in demand at what's normally Europe's busiest travel hub.

The imposition of a 14-day quarantine for people arriving from countries with high Covid-19 infection rates means Britain is effectively cut off from markets including the US, Canada and Singapore, Heathrow said.

Chief Executive Officer John Holland-Kaye said the quarantine policy "continues to strangle the UK economy," with tens of thousands of jobs being lost. He repeated calls for the government to adopt coronavirus testing at the airport to free up travel while guarding against a new wave of the pandemic.

([Link: AJOT](#))

JETBLUE GOES GREEN – CARRIER STARTS OFFSETTING CARBON ON DOMESTIC FLIGHTS



In pursuit of its aim to achieve carbon neutrality on all domestic US flying, JetBlue has started to offset its jet fuel carbon dioxide emissions. The company is also investing in sustainable aviation fuel (SAF) and is fuelling flights from San Francisco International Airport (SFO) with SAF.

“The global pandemic reinforces the need to mitigate risks that threaten the health of our business. Our commitment to sustainability has only become more important as we prepare our business for a new climate reality,” said Joanna Geraghty, chief operating officer, JetBlue. “Even with a long recovery ahead following the COVID-19 pandemic, JetBlue remains focused on short- and long-term environmental opportunities, particularly lessening our largest impact – carbon emissions – and more fuel-efficient flying.”
(Link: Aviation News)

AIRLINES AND AIRPORTS PUSH UN TO SWAP QUARANTINE FOR TESTING

Airports Council International (ACI) and International Air Transport Association (IATA) are asking the UN-led inter-agency task force to recommend countries accept negative COVID-19 tests instead of quarantining people coming from high-risk countries.

“A test prior to departure could reduce the risk of importation by up to 90%, enabling air travel to be opened up between a large number of countries without a quarantine requirement,” the proposal states. It recommends to accept negative PCR (polymerase chain reaction) test results issued no earlier than 48 hours before the flight in cases of traveling from a country with high COVID-19 infection rate.

The procedure could speed up international travel, which was greatly slowed down by lockdowns and quarantine protocols, resulting in what was called the worst crisis in the history of the aviation industry. IATA said it is expecting traffic volume to recover no earlier than 2024. *(Link: AeroTime Hub)*